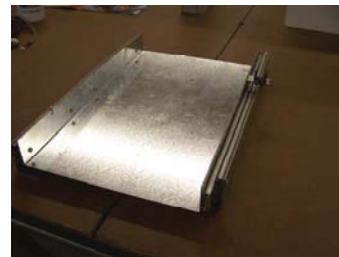
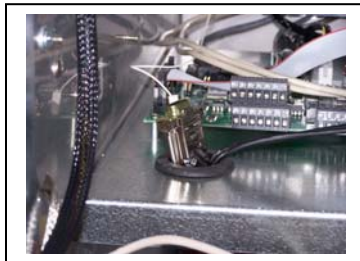


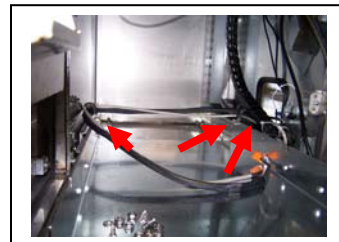
New LVPS is required. Includes a 34vDC output that must be adjusted to 36vDC



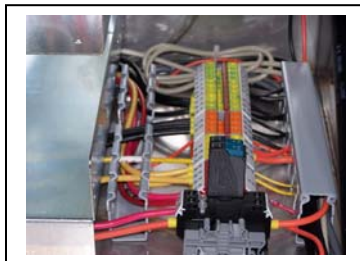
A new Bill Dispenser tray is required. Tray is notched for easy placement.



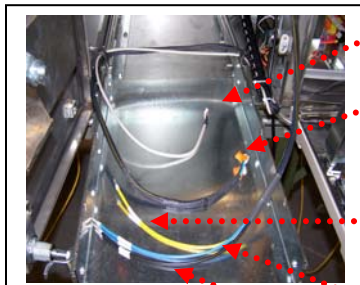
Bill Dispenser RS232 Com port is routed through grommet in front of PIO board



Wire track is attached to right side of tray. Wire loops have been added to back of left and right sides.



Yellow 12vDC wire from Bill Dispenser is connected to terminal block



Serial Cable

Power connector

Terminal block wiring
Yellow wire – 12vDC

LVPS wiring
Blue wire – 36vDC
Black wire – common

Ensure that field wiring is routed away from wire track harness.

